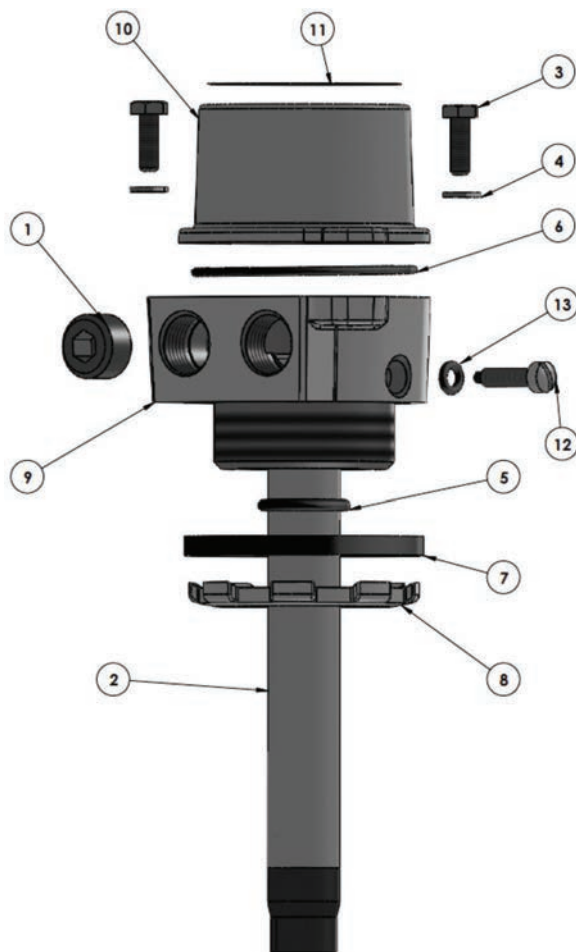


## FT101, FT151 & FT202 Series **Overfill Sensor Housings**



### Bill of Materials

Item #	Description	Part #	Qty
1	polypropylene pipe plug	<b>10103</b>	1
2	probe	see repair kits	1
3	stainless steel screw	<b>10110</b>	2
4	stainless steel lock washer - 1/4"	<b>10111</b>	2
5	FKM O-ring	<b>10125 (was FT9027)</b>	1
6	Buna O-ring	<b>10126 (was FT9049)</b>	1
7	Buna-n gasket	<b>250-G-BU (was FT9026)</b>	1
8	steel lock nut	<b>10128 (was FT9012)</b>	1
9	aluminum sensor housing	<b>10183 (was FT9033)</b>	1
10	aluminum sensor housing cap	<b>10185</b>	1
11	mylar label - overfill sensor	<b>10203</b>	1
12	stainless steel screw with nylon insert	<b>10212</b>	1
13	Buna-N O-ring	<b>10213</b>	1

### Repair Kits

Part #	Description	Includes Item #
<b>FT100</b>	Replacement 5 wire overfill detection probe. -7"	2
<b>FT100-12</b>	Replacement 5 wire overfill detection probe. -12"	2
<b>FT100-18</b>	Replacement 5 wire overfill detection probe. -18"	2
<b>FT150</b>	Replacement black & white 2 wire overfill detection probe. - 7"	2
<b>FT150-12</b>	Replacement black & white 2 wire overfill detection probe. - 12"	2
<b>FT150-18</b>	Replacement black & white 2 wire overfill detection probe. - 18"	2
<b>FT201</b>	Replacement red & black 2 wire overfill detection probe. - 7"	2
<b>FT201-12</b>	Replacement red & black 2 wire overfill detection probe. - 12"	2
<b>FT201-18</b>	Replacement red & black 2 wire overfill detection probe. - 18"	2
<b>FT9000</b>	Complete replacement sensor housing (without probe)	1, 3 -13
<b>FT9001</b>	Sensor housing gasket & O-ring kit	5-7, 13
<b>FT9002</b>	Sensor housing gasket, O-ring & hardware kit	1, 3-8, 12, 13
<b>FT9011</b>	Sensor housing cap with screws & lock washers	3, 4, 10

Product instruction sheets and technical data can be viewed on our website at [dixongroupcanada.com](http://dixongroupcanada.com) by selecting the 'Resources' menu.