

### Synthetic Single Jacket Mill Hose

**Application**

- Used in open end water discharge applications only; not intended for fire fighting service



**Materials**

- Outer construction: single jacket, all polyester
- Tube construction: black rubber

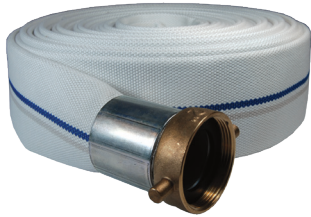
**Feature**

- Consult Dixon® for pricing and availability of additional lengths and other configurations

**Specifications**

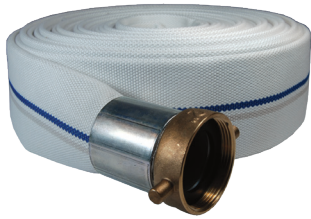
- Burst pressure: **450 PSI** at 70°F (21°C)
- Proof test pressure: **300 PSI** at 70°F (21°C)
- Service test pressure: **150 PSI** at 70°F (21°C)

**Coupled with NPSH Female and Male King™ Short Shank Couplings, Crimp Sleeve, Aluminum Shank with Brass Pin Lug Swivel Nut**



Size	Length	Part #
1-1/2"	25'	M15-25KAS
	50'	M15-50KAS
2"	25'	M20-25KAS
	50'	M20-50KAS
2-1/2"	25'	M25-25KAS
	50'	M25-50KAS
3"	25'	M30-25KAS
	50'	M30-50KAS

**Coupled with NST (NH) Female and Male King Short Shank Couplings, Crimp Sleeve, Aluminum Shank with Brass Pin Lug Swivel Nut**



Size	Length	Part #
1-1/2"	25'	M15-25KAF
	50'	M15-50KAF
2-1/2"	25'	M25-25KAF
	50'	M25-50KAF

**Coupled with Female and Male (C and E) Global Aluminum Cam & Groove, Crimp Sleeve**



Size	Length	Part #
1-1/2"	25'	M15-25GAX
	50'	M15-50GAX
2"	25'	M20-25GAX
	50'	M20-50GAX
2-1/2"	25'	M25-25GAX
	50'	M25-50GAX
3"	25'	M30-25GAX
	50'	M30-50GAX
4"	25'	M40-25GAX
	50'	M40-50GAX