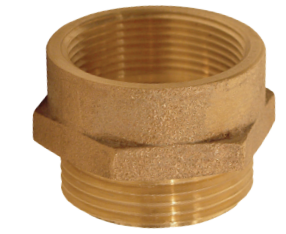


Female to Male Hex Nipples

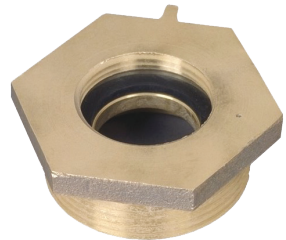
Table continued from previous page



reducer



same size



increaser

Female Thread	Male Thread	Cast Brass Part #
2-1/2" NST (NH)	3/4" NPT	FM25F75T
	1" NPT	FM25F10T
	1-1/2" NST (NH)	FM25F15F
	1-1/2" NPT	FM25F15T
	2" NPT	FM25F20T
	2-1/2" NST (NH)	FM25F25F
	2-1/2" NPT	FM25F25T
	3" NST (NH)	FM25F30F
	3" NPT	FM25F30T
	2-1/2" NPSH	FM25F25S
3" NPT	2-1/2" NST (NH)	FM3025F
	2-1/2" NPT	FM3025T
	3" NST (NH)	FM3030F
3" NST (NH)	2-1/2" NST (NH)	FM30F25F
	2-1/2" NPT	FM30F25T
3" NPSH	3" NPT	FM30F30T
	2-1/2" NST (NH)	FM30S25F
4" NPT	2-1/2" NST (NH)	FM4025F
	4" NST (NH)	FM4040F
	4-1/2" NST (NH)	FM4045F
4" NST (NH)	4" NPT	FM40F40T
4-1/2" NST (NH)	4" NPT	FM45F40T
6" NPT	6" NST (NH)	FM6060F
6" NST (NH)	6" NPT	FM60F60T

Female to Male Hex Nipples (New York Threads)

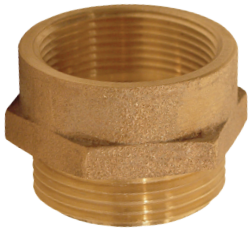
Feature

- Other configurations are available, consult Dixon® for information

Specifications

- NYFD thread = 3.031 x 8 TPI
- NYC thread = 3.00 x 8 TPI

N



reducer



same size



increaser

Female Thread	Male Thread	Cast Brass Part #
1-1/2" NPT	1-1/2" NYFD	FM1515NYFD
1-1/2" NST (NH)	1-1/2" NYFD	FM15F15NYFD

Female Thread	Male Thread	Cast Brass Part #
2-1/2" NPT	2-1/2" NYC	FM2525NYC
	2-1/2" NYFD	FM2525NYFD
2-1/2" NST (NH)	2-1/2" NYC	FM25F25NYC
	2-1/2" NYFD	FM25F25NYFD
2-1/2" NYC	2-1/2" NST (NH)	FM25NYC25F
	2-1/2" NPT	FM25NYC25T

Female NYFD Thread	Male Thread	Cast Brass Part #
1-1/2"	1-1/2" NST (NH)	FM15NYFD15F
	1-1/2" NPT	FM15NYFD15T
	1-1/2" NPT	FM25NYFD15T
2-1/2" NYFD	2-1/2" NST (NH)	FM25NYFD25F
	2-1/2" NPT	FM25NYFD25T
2-1/2"	2" NPT	FM25NYFD20T
	3" NPT	FM25NYFD30T

NOTE: All adapters are made to approved Dixon specifications.

NOTE: Replacement washers can be found on page 827