

Hydraulic Adapters – 37° JIC

Flare Caps

Specifications

- Reference SAE 070112
- Pressure rating at 70°F (21°C)

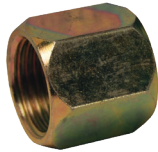


| Female JIC 37° Flare | Tube O.D. | PSI | Zinc Plated Steel Part # |
|----------------------|-----------|------|--------------------------|
| 5/16" – 24 | 1/8" | 5000 | 0304C-2 |
| 7/16" – 20 | 1/4" | | 0304C-4 |
| 9/16" – 18 | 3/8" | | 0304C-6 |
| 3/4" – 16 | 1/2" | 4500 | 0304C-8 |
| 7/8" – 14 | 5/8" | | 0304C-10 |
| 1-1/16" – 12 | 3/4" | 3500 | 0304C-12 |
| 1-5/16" – 12 | 1" | | 0304C-16 |
| 1-5/8" – 12 | 1-1/4" | 2500 | 0304C-20 |
| 1-7/8" – 12 | 1-1/2" | 2000 | 0304C-24 |
| 2-1/2" – 12 | 2" | 1500 | 0304C-32 |

Flare Tube Nuts

Specifications

- Reference SAE 070110
- Pressure rating at 70°F (21°C)



| Female JIC 37° Flare | Tube O.D. | PSI | Zinc Plated Steel Part # |
|----------------------|-----------|------|--------------------------|
| 7/16" – 20 | 1/4" | 5000 | 0318-4 |
| 9/16" – 18 | 3/8" | | 0318-6 |
| 3/4" – 16 | 1/2" | | 0318-8 |
| 7/8" – 14 | 5/8" | 3500 | 0318-10 |
| 1-1/16" – 12 | 3/4" | | 0318-12 |
| 1-5/16" – 12 | 1" | 3000 | 0318-16 |

Screw Thread Plugs

Specifications

- Reference SAE 070109
- Pressure rating at 70°F (21°C)



| Male JIC 37° Flare | PSI | Zinc Plated Steel Part # |
|--------------------|------|--------------------------|
| 5/16" – 24 | 5000 | 1254-02H |
| 7/16" – 20 | | 1254-04H |
| 9/16" – 18 | | 1254-06H |
| 3/4" – 16 | 4500 | 1254-08H |
| 7/8" – 14 | | 1254-10H |
| 1-1/16" – 12 | 3500 | 1254-12H |
| 1-5/16" – 12 | | 1254-16H |
| 1-5/8" – 12 | 2500 | 1254-20H |

Flare Tube Sleeves

Specifications

- Reference SAE 070115
- Pressure rating at 70°F (21°C)

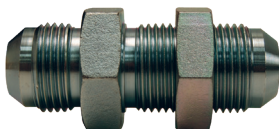


| Female JIC 37° Flare | PSI | Zinc Plated Steel Part # |
|----------------------|------|--------------------------|
| 7/16" – 20 | 5000 | 0319-4 |
| 9/16" – 18 | | 0319-6 |
| 3/4" – 16 | | 0319-8 |
| 7/8" – 14 | 3500 | 0319-10 |
| 1-1/16" – 12 | | 0319-12 |
| 1-5/16" – 12 | 3000 | 0319-16 |

Flare Bulkhead Unions with Lock Nut

Specifications

- Reference SAE 070601
- Pressure rating at 70°F (21°C)



| Male JIC 37° Flare | PSI | Zinc Plated Steel Part # |
|--------------------|------|--------------------------|
| 7/16" – 20 | 5000 | 2700LN-4 |
| 9/16" – 18 | | 2700LN-6 |
| 3/4" – 16 | | 2700LN-8 |
| 7/8" – 14 | 3500 | 2700LN-10 |
| 1-1/16" – 12 | | 2700LN-12 |
| 1-5/16" – 12 | 3000 | 2700LN-16 |

K