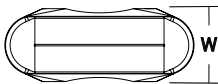
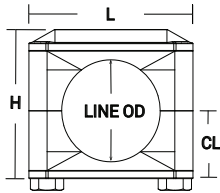
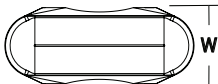
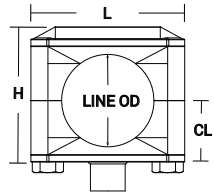
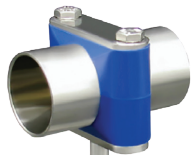


Pipe Size Uni-Hinge Block Hangers



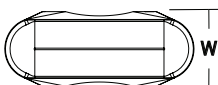
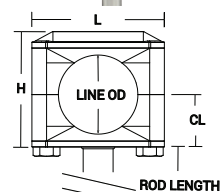
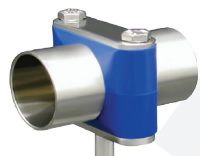
Base Mount Block Hangers - B24V-BM

Pipe Size	Line O.D. (in)	H (in)	L (in)	W (in)	CL (in)	Round Coupling		304 Stainless Steel Part #
						Height (in)	Thread	
1"	1.31	2.19	2.49	0.75	0.97	.47	3/8"-16	B24V-BM-G100
1-1/2"	1.90	2.69	2.99	0.88	1.25	.47	3/8"-16	B24V-BM-G150
2"	2.38	3.19	3.36	0.88	1.49	.59	1/2"-13	B24V-BM-G200
2-1/2"	2.88	3.63	3.74	0.88	1.71	.59	1/2"-13	B24V-BM-G250



Base Mount Block Hanger Threaded Couplings - B24V-BMTC

Tube Size	Line O.D. (in)	H (in)	L (in)	W (in)	CL (in)	Round Coupling		304 Stainless Steel Part #
						Height (in)	Thread	
1"	1.00	1.70	1.93	0.75	0.73	.47	3/8"-16	B24-BMTC-G100
1-1/2"	1.50	2.19	2.49	0.75	0.97	.47	3/8"-16	B24-BMTC-G150
2"	2.00	2.69	2.99	0.88	1.25	.47	3/8"-16	B24-BMTC-G200
2-1/2"	2.50	3.19	3.36	0.88	1.49	.59	1/2"-13	B24-BMTC-G250



Base Mount Block Hanger Rod Mounts - B24V-BMR6

Pipe Size	Line O.D. (in)	H (in)	L (in)	W (in)	CL (in)	Rod (stock length)		304 Stainless Steel Part #
						Length (in)	O.D.	
1"	1.32	2.19	2.49	0.75	1.94	6.00	.38	B24V-BMR6-G100
1-1/2"	1.90	2.69	2.99	0.88	2.44	6.00	.38	B24V-BMR6-G150
2"	2.38	3.19	3.36	0.88	2.81	6.00	.50	B24V-BMR6-G200
2-1/2"	2.88	3.63	3.74	0.88	3.19	6.00	.50	B24V-BMR6-G250

M